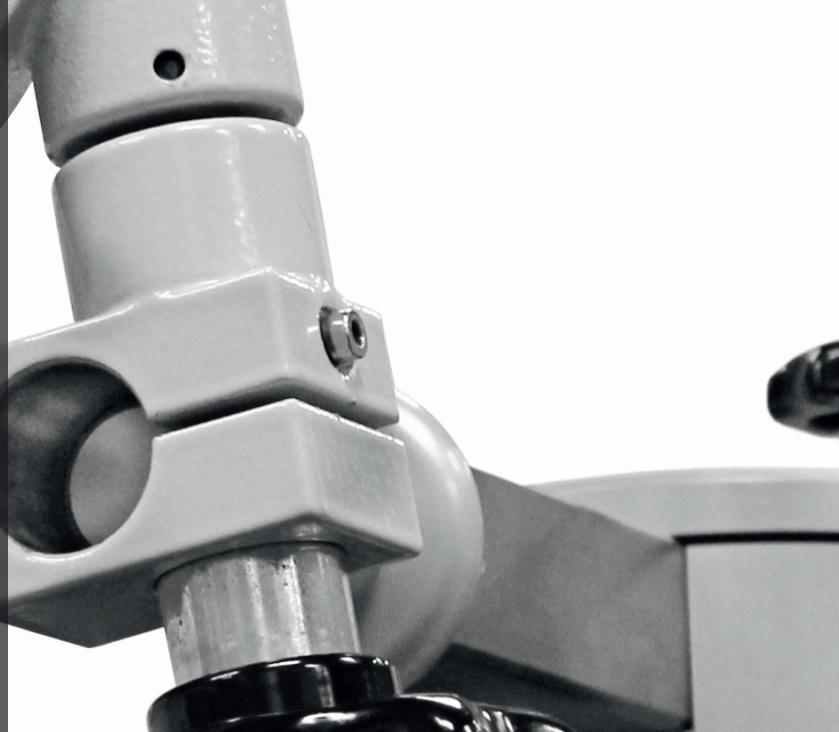


# Y.XMB SERIES ACCESSORIES



## ACCESSORIES FOR Y.XMB

For more than 60 years YXLON Copenhagen have manufactured high quality X-ray systems. Our systems have always been designed to be reliable and efficient in all conditions. In order to stay in this position, as a market leader, we draw on both our knowledge and experience.

Mobile constant potential X-ray generators from YXLON Copenhagen, with extremely high X-ray power of up to 2.25 kW, combined with a compact X-ray tube mounted on a flexible X-ray cable, are perfectly designed to access even the most challenging inspection tasks in narrow and hard to reach spaces, for example for operations at nuclear power plants or in the petrochemical industry.

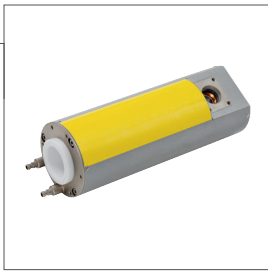
The mobile Y.XMB X-ray system with 100, 160 or 225 kV, supports a wide range of different high quality X-ray tubes, from directional to panoramic, with different beam shapes and different size focal spots. The Y.XMB system feature a broad mA range from 0-20 mA depending on the chosen system and X-ray tube, and it supports high voltage cables with lengths up to 20 meters.

Our experience has taught us that the application possibilities of YXLON mobile products are numerous, and they all pose different challenges to both equipment and operator. In order to meet these challenges a range of accessories has been designed. The accessory selection, will help to make your workflow safe and more efficient.

### Y.TU 100-D02

Ultra-compact X-ray tube for thin and low density materials.

- Focal spot size EN 12543: 1.0 / 3.0 mm
- Max X-ray power: 640 / 1500 W
- Weight: 6 kg
- Beam angle: 40° x 40°
- Leakage radiation max. kV - max. mA: 1.0 mSv/h



### Y.TU 160-D03

Dual focal spot X-ray tube ensuring both high resolution and medium power requirements.

- Focal spot size EN 12543: 1.0 / 3.0 mm
- Max X-ray power: 640 / 1600 W
- Weight: 8 kg
- Beam angle: 40° x 40°
- Leakage radiation max. kV - max. mA: 2.5 mSv/h



### Y.TU 160-D05

Dual 1.0 mm focal spot X-ray tube for high resolution and optimum tube life, combined with high power.

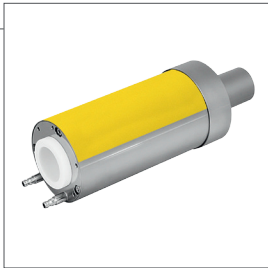
- Focal spot size EN 12543: 1.0 / 1.0 mm
- Max X-ray power: 1000 / 1000 W
- Weight: 8 kg
- Beam angle: 40° x 40°
- Leakage radiation max. kV - max. mA: 2.5 mSv/h



### Y.TU 160-P01

Compact X-ray tube with 360° panoramic beam and 0.4 x 4.0 mm focal spot.

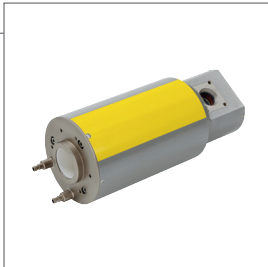
- Focal spot size EN 12543: 0.4 x 4.0 mm
- Max X-ray power: 1000 W
- Weight: 8 kg
- Beam angle: 40° x 360°
- Leakage radiation max. kV - max. mA: 2.5 mSv/h



### Y.TU 225-D03

Dual focal spot X-ray tube ensuring both high resolution and medium power requirements.

- Focal spot size EN 12543: 1.0 / 3.0 mm
- Max X-ray power: 640 / 1600 W
- Weight: 11 kg
- Beam angle: 40° x 40°
- Leakage radiation max. kV - max. mA: 5.0 mSv/h



### Laser Pointer and Collimator

A laser pointer is a practical tool for precise alignment of the X-ray tube head.

The system consist of two different collimators and a frame carrying a laser pointer for alignment.



# YXLON

Technology with Passion

YXLON International A/S  
a company of the COMET Group  
Helgeshøj Alle 38, 2630 Taastrup, Denmark  
T +45 72 40 77 00, VAT DK 18 21 52 33  
yxlون@cph.yxlون.com, www.yxlون-portables.com

### Y.TU 160-D02

Dual focal spot X-ray tube ensuring both high resolution and high power requirements.

- Focal spot size EN 12543: 1.0 / 5.5 mm
- Max X-ray power: 640 / 3000 W\*
- Weight: 8 kg
- Beam angle: 40° x 40°
- Leakage radiation max. kV - max. mA: 2.5 mSv/h

\* Limited to the YXMB specifications



### Y.TU 160-D04

Dual 1.0 mm focal spot X-ray tube for high resolution and optimum tube life.

- Focal spot size EN 12543: 1.0 / 1.0 mm
- Max X-ray power: 640 / 640 W
- Weight: 8 kg
- Beam angle: 40° x 40°
- Leakage radiation max. kV - max. mA: 2.5 mSv/h



### Y.TU 160-D06

Dual 0.4 / 1.0 mm focal spot X-ray tube for optimized high resolution combined with high power.

- Focal spot size EN 12543: 0.4 / 1.0 mm
- Max X-ray power: 800 / 1800 W
- Weight: 8 kg
- Beam angle: 40° x 30°
- Leakage radiation max. kV - max. mA: 2.5 mSv/h

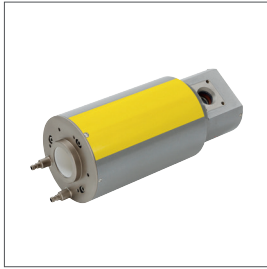


### Y.TU 225-D02

Dual focal spot X-ray tube ensuring both high resolution and high power requirements.

- Focal spot size EN 12543: 1.0 / 5.5 mm
- Max X-ray power: 640 / 3000 W\*
- Weight: 11 kg
- Beam angle: 40° x 40°
- Leakage radiation max. kV - max. mA: 5.0 mSv/h

\* Limited to the YXMB specifications



### Y.TU 225-D04

Dual 0.4 / 1.0 mm focal spot X-ray tube for optimized high resolution, combined with high power.

- Focal spot size EN 12543: 0.4 / 1.0 mm
- Max X-ray power: 800 / 1800 W
- Weight: 11 kg
- Beam angle: 40° x 30°
- Leakage radiation max. kV - max mA: 5.0 mSv/h



### Mobile Tripod Tube Stand

A light-weight solution consisting of a tripod combined with a dolly for extended mobility.

Mobility combined with agile positioning of 100 and 160 kV X-ray tubes for the YXMB system saves both repositioning time and manpower.

